

Ram Balak Mahto
Guest faculty
Zoology department
v.s.j college Rajnagar Madhubani
Class B.Sc 3rd yr. Paper 6, group-A 7908055676

FOOTPRINTING-P1

DNase I footprinting is used to precisely localise the position that a DNA binding protein, *e.g.* a transcription factor, binds to a DNA fragment. A DNA fragment of a few hundred bp is labeled at one end and then incubated with the proteins suspected to bind. After a limited digestion with DNase I, the reaction is quenched, DNA is precipitated and analysed on a denaturing polyacrylamide gel. This protocol uses ³²P-radioactively labeled DNA.

Materials and Reagents

1. Oligonucleotides (usually 20-30 mer) to amplify a suitable fragment (100-400 bp) encompassing the region to be tested for protein binding ability
2. Plasmid DNA carrying the cloned required region to use as template for the PCR amplification
3. [-³²P] ATP (3,000 Ci/mmmole, 30 μCi = 3 μl/labeling) (*e.g.* NEN, catalog number: BLU502A)
4. Polynucleotide kinase (PNK) (*e.g.* Biolabs, catalog number: M0201)
5. Agarose
6. Purified protein (or enriched crude bacterial extracts see below)
7. DNase I (*e.g.* Sigma-Aldrich, catalog number: D5025)
8. Phenol
9. Chloroform
10. Herring sperm DNA (*e.g.* Sigma-Aldrich, catalog number: D6898; Roche, catalog number: 223 646)
11. BSA (*e.g.* Biolabs, catalog number: B9001)
12. Acrylamide
13. Urea
14. DTTP (*e.g.* Biolabs, catalog number: N0447)
15. Taq polymerase (5 units/μl) (*e.g.* Biolabs, catalog number: M0267)

16. DNA Marker (*e.g.* 100 bp ladder, Biolabs, catalog number: N3231)
17. Antarctic alkaline phosphatase (Biolabs, catalog number: M0296)
18. MspI (Biolabs, catalog number: N3032)
19. 40% Acrylamide stock (19:1 acrylamide: bis acrylamide) (*e.g.* Euromedex, catalog number: EU0076-C)
20. TBE buffer
21. Binding buffer (see Recipes)
22. DNase I dilution buffer (see Recipes)
23. DNase I stop buffer (see Recipes)
24. DNase I stock (see Recipes)
25. Loading formamide dyes (see Recipes)
26. Denaturing Sequencing gel (6% acrylamide) (see Recipes)
27. Hepes-Glutamate (see Recipes)

Equipment

1. Suitable space for working with ³²P radioactivity
2. Image quantification apparatus (*e.g.* Typhoon GE Healthcare Life Sciences; X-ray film and developing materials)
3. PCR machine
4. Small horizontal agarose gel apparatus
5. Transilluminator (preferably 365 nM)
6. Apparatus for running a 30 cm sequencing gel (*e.g.* Model S2 Vertical sequencing apparatus, now sold by Biometra)
7. Power supply capable of producing 2,000 volts and 60 watts)
8. Geiger counter to monitor for radioactivity and any contamination.
9. Heating block at 90 °C
10. Gel drying apparatus

Ram Balak Mahto
Guest faculty
Zoology department
v.s.j college Rajnagar Madhubani
Class B.Sc 3rd yr. Paper 6, group-A 7908055676

FOOTPRINTING -P2

Procedure

A. Preparation of the labeled DNA fragment

1. Label the 5' end of one of the oligonucleotides to be used to make the fragment to footprint. Choose the oligo so that the suspected binding site is not too far from the labeled end. Normally the footprint should be performed on both strands of the DNA, *i.e.* using two DNA fragments labeled at either end. Use a 0.5 ml tube suitable for PCR. 3 μ l Oligo 1, 10 pmoles/ μ l 2 μ l 10x PNK buffer (supplied by manufacturer of PNK) 3 μ l [- 32P] ATP (3,000 Ci/mmol) 11 μ l H₂O 1 μ l (10 units) PNK

Incubate 30 min 37 °C *N.B. Take suitable precautions for use of radioactivity. Perform in approved location.*

2. Precipitate the labeled oligo. add

80 μ l 0.1M Sodium acetate (natural pH about 9.0) 1 μ l 10 mM Sodium phosphate buffer, pH 7.4 250 μ l ethanol (96%) Incubate in dry ice for 30 min (or at -80 °C for > 1 h).

3. Centrifuge 15 min 4 °C 12,000 \times g.

4. Carefully remove the supernatant.

5. Rinse the (tiny) pellet with 100 μ l 96% ethanol (or 70% ethanol at -20 °C). Centrifuge 5 min 4 °C 12,000 \times g.

6. Carefully remove the supernatant. Dry *in vacuo* 5 min.

7. Resuspend the labeled Oligo 1 in 35 μ l H₂O. Vortex well and give a quick centrifugation to place all labeled oligo in bottom of tube.

8. Add 5 μ l Thermopol buffer (Biolabs or other suitable Taq polymerase buffer). 5 μ l deoxyNTP mix containing 2.5 mM each dATP, dCTP, dGTP, dTTP. 4 μ l Oligo 2 10 pmoles/ μ l (Oligo 2 corresponds to the other end of fragment to be amplified). 1 μ l template DNA (*e.g.* plasmid DNA carrying the cloned region to be amplified, about 50 ng depending on size of plasmid. We usually use 1 μ l 1/10 dilution of standard mini plasmid DNA preparation). Mix well, quick centrifugation and add 0.5 μ l (2.5 units) Taq polymerase (5 units/ μ l) and immediately start PCR.

9. PCR cycling

a. Denature 94 °C for 2 min

b. 94 °C for 30 sec

c. 55 °C* for 30 sec

d. 72 °C for 30 sec*

e. Repeat b-d 25 times

f. Final extension 5 min 72 °C

* The temperature of annealing depends upon the oligonucleotides used and the extension time at 72 °C on the length of the fragment amplified. Footprints on fragments greater than 500 bp are not recommended and so 30 sec is usually good for most fragments.

10. Test 1-2 μ l on small agarose gel (containing ethidium bromide or other suitable DNA detection reagent) for amplification of a fragment of the correct size and check you have a fragment of the correct size in good yield (*i.e.* most or all of the oligos have been used up) 30 pmoles of oligos can give maximally 2 μ g of a fragment of 100 bp and 10 μ g of a fragment 500 bp. Proceed to purification. In theory you can use the PCR as it is or after passage through a spin column. However any minor, shorter length contaminants will produce artifactual bands in the footprint and the presence of unincorporated radioactivity will not allow you to estimate the amount of radioactive DNA in the footprinting reactions. So we always proceed to purify the labeled DNA from an agarose gel. In exceptional cases *e.g.* to eliminate a close running contaminant band from a short (100-200 bp) fragment, the fragments can be purified on a native acrylamide gel (see step A-14 below).

11. Run the PCR mixture, mixed with 10 μ l of loading dyes, on a small 1% agarose gel in 50 mM TBE buffer. Usually the whole 50 μ l PCR can be loaded in 3 wells.

12. Visualize the gel on a long wavelength (365 nm) transilluminator (to minimize damage to the DNA by short wavelength) and cut out the agarose containing the radioactive fragment. Discard rest of gel as radioactive waste.

13. Extract the DNA from agarose using a gel purification kit (*e.g.* Machery-Nagel Nucleospin Gel and PCR clean-up). Elute in 50 μ l elution buffer.

14. To purify the DNA from an acrylamide gel: run the PCR mix on a native acrylamide gel (5-8% depending upon size in 50 mM TBE at room temperature *i.e.* do not allow the gel to heat up. Depending upon the size of the apparatus used 100-200 volts should be adequate). Locate the radioactive DNA by short exposure of the wet gel wrapped in Saran wrap to a phosphorimager screen (or X-ray film). The piece of acrylamide containing the radioactive band is cut out and the radioactive DNA eluted by shaking overnight at 37 °C in 1 ml of 0.5 M ammonium acetate, 0.1% SDS, 1 mM EDTA. Separate the aqueous phase from the acrylamide gel piece by centrifugation and transfer to another tube. Extract with 0.5 ml phenol/CHCl₃ and precipitate the DNA with 2.5 volumes ethanol in dry ice for at least 30 min. Centrifuge 10 min 4 °C, remove all the supernatant, dry *in vacuo* 2-3 min) Resuspend in 50 μ l elution buffer (as for DNA eluted from agarose.).

15. Run 1 μ l on a new small agarose gel and estimate the quantity by comparison to the staining intensity of marker DNAs (*e.g.* 100 bp ladder).

16. Count 1 μ l by Kerenkov radiation in a scintillation counter or estimate using a Geiger counter. Expect to have 50,000-150,000 cpm/ μ l with about 5-50 ng DNA/ μ l (yield in range 10-50% of the moles of starting oligonucleotide.) You can calculate the molar concentration of the DNA fragment from the length of the fragment in bp and using 1 bp corresponds to a molecular mass of 660. B.

Ram Balak Mahto
Guest faculty
Zoology department
v.s.j college Rajnagar Madhubani
Class B.Sc 3rd yr. Paper 6, group-A 7908055676

FOOTPRINTING –P3

The footprinting reaction

1. All protein and DNA dilutions are made in 1x binding buffer. Protein dilutions are made at 4 °C to minimize any instability of the protein in dilute solutions. Binding reactions can be made at RT or at 30 °C or 37 °C depending upon the experiment. *E.g.* most prokaryotic transcription factors bind DNA at RT. *E.coli* RNA polymerase will only form open complexes at 37 °C.

2. The binding buffer we usually use is Hepes-Glutamate. The concentration of K glutamate can be increased or decreased according to the experiment; generally higher salt favors specificity but decreases affinity. Mg⁺⁺ salts (1-10 mM) can be added according to the experiment, *e.g.* Mg⁺⁺ is required for RNA polymerase binding. The BSA is added to stabilize dilute proteins and prevent non-specific absorption to the microfuge tube. The reaction mix in general consists of 20 µl DNA solution to which we add 20 µl of the diluted protein (if several components need to be tested at the same time the volume for each component can be reduced accordingly to give a final volume of 40 µl).

3. To test a range of protein concentrations for binding to the labeled DNA. Make a suitable volume of binding buffer and keep on ice. Prepare a series of dilution tubes for the protein to test over a range of concentrations. This range depends entirely on the protein under study as binding constants can vary from nM to nearly mM. *E.g.* for 10 serial dilution of ½ concentration each step, Prepare 10 tubes with 25 µl binding buffer on ice.

4. Prepare a suitable volume of labeled DNA *e.g.* For 12 reactions prepare 240 µl binding buffer and add labeled DNA fragment to have about 20,000 -100,000 cpm/reaction. Mix well. Ideally this should give a final concentration of the DNA of about 1 nM in the 40 µl footprinting reaction, if binding constants of protein to DNA are in the nM range.

5. Dispense 20 µl of the DNA mix into 12 1.5 ml microtubes at RT.

6. Make the protein dilutions on ice and immediately mix the diluted protein with the DNA at RT. *E.g.* Dilute the protein to 1 μM in 50 μl binding buffer.

a. Add 20 μl to one tube of DNA (to give final concentration of 500 nM). Mix by pipetting.

Leave at RT until finished all mixes.

b. Take 25 μl of the 1 μM dilution and mix with 25 μl binding buffer in next dilution tube.

c. Add 20 μl of this dilution to the next DNA tube (final concentration 250 nM).

d. Take 25 μl of the 0.5 μM dilution and mix with 25 μl binding buffer in next dilution tube.

e. Continue for the whole series of 10 dilutions.

7. Add 20 μl 1x binding buffer to two DNA samples for the (essential) controls without protein.

8. Incubate for 10 min at RT (or at chosen temperature for chosen time).

18. Centrifuge again, 5 min 4 $^{\circ}\text{C}$. Remove the rest of the liquid with a 20 μl pipette tip. Verify that the radioactivity is still in the tube.

19. Dry *in vacuo* 5 min.

20. Resuspend in 5 μl H₂O and add 6 μl gel loading formamide dyes (deionized formamide with Bromophenol blue and Xylene cyanol). Vortex well. Quick centrifuge to put all liquid in bottom of tube.

21. Heat to 90 $^{\circ}\text{C}$ for 2 min. Quench in ice and immediately load (5 μl) onto a denaturing (7 M urea) acrylamide sequencing gel, acrylamide (19:1 acrylamide: bis-acrylamide), which has been prerun for 30 min to 1 h to get hot. Voltage and wattage depends upon the apparatus used. We use 60 watts for the Model S2. Use with 5-10% final concentration acrylamide depending on the size of the fragment under investigation.

22. To locate the site of protein binding it is necessary to calibrate gels with molecular weight markers. *E.g.* DNA marker pBR322 digested with MspI, treated with alkaline phosphatase (*e.g.* Antarctic alkaline phosphatase) and labeled with [^{-32}P] ATP and PNK or a sequencing ladder prepared using the same Oligo 1, which was used for the radioactive labeling of the fragment.

23. Electrophorese at 60 watts for a 30 x 30 plates and 1 mM thick gels using the Model S2 apparatus. Adjust volts and power for other sized gels. Time of migration depends upon the size of the fragment and expected position of protein binding sites (generally 80 min to 3 h).

24. After migration, allow to cool slightly, open plates, transfer the gel to Whatman 3 mm paper. Cover with Saran wrap and dry on a gel drying apparatus.

25. Put the dried gel, still covered with Saran to expose in a Phosphorimager cassette overnight (alternatively expose to X-ray film with an intensifying screen).

26. The pattern of DNase I cleavages with and without protein indicates the site of protein binding (Figure 1). Deformations such as bent or looped DNA are indicated by hypersensitive cleavages compared to the control (free DNA), since bending of the DNA has facilitated attack by DNase I in the wider minor groove formed on the outside of the loop or bend (Figure 2).

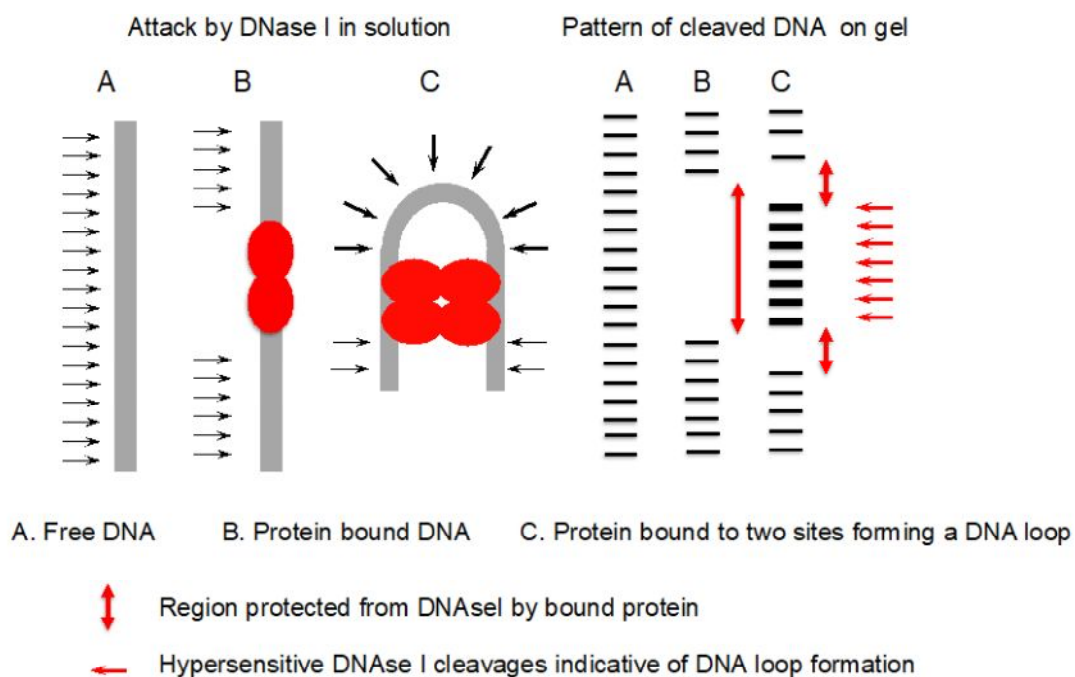
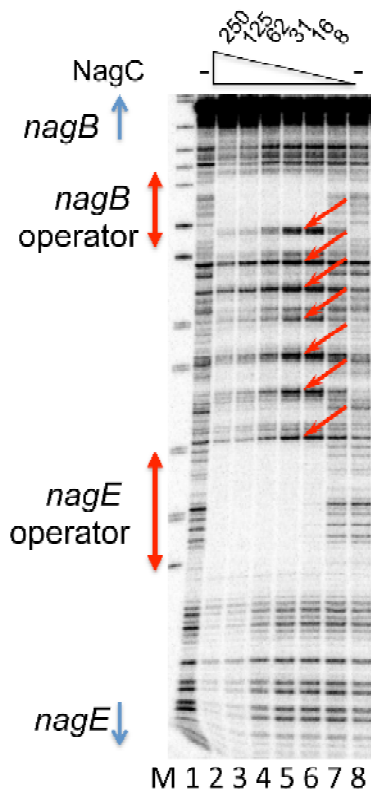


Figure 1. Principle of DNase I footprinting



Example of DNase I footprinting:
NagC binding to the *nagE-nagB* intergenic region

- Lane M. DNA size marker[#]
- Lane 1. free DNA (*nagB-nagE*^{*})
- Lane 2. DNA + 250 nM NagC
- Lane 3. DNA + 125 nM NagC
- Lane 4. DNA + 62 nM NagC
- Lane 5. DNA + 31 nM NagC
- Lane 6. DNA + 16 nM NagC
- Lane 7. DNA + 8 nM NagC
- Lane 8. free DNA (*nagB-nagE*^{*})

Note two regions protected, corresponding to *nagB* and *nagE* operators, and hypersensitive or persistent cleavages in the intergenic region, indicative of DNA loop formation.

* DNA labelled at *nagE* oligo
[#] pBR322 digested with Msp1: Sizes from top to bottom
 242,238, 217,201,190,180,160,147,123,110,90,76,67

Figure 2. Example of DNase I footprinting

27. Using the Image Quant program, it is possible to quantify the amount of radioactivity in specific bands or regions, corresponding to protein protected sites and non-protected regions, and hence to derive binding constants for the proteins.

Recipes

1. Binding buffer

25 mM HEPES (pH 8.0)

100 mM K glutamate (pH 8.0)

0.5 mg/ml BSA

2. DNase I dilution buffer

10 mM Tris (pH 8.0)

10 mM MgCl₂

10 mM CaCl₂

125 mM KCl

0.1 mM DTT

3. DNase I stop buffer

0.5 M Na acetate pH 5.0

10 µg/ml DNA (*e.g.* sonicated herring sperm DNA. Suspend DNA in 10 mg/ml H₂O and allow to hydrate overnight at 4 °C. Sonicate until the solution loses all viscosity)

2.5 mM EDTA

4. DNase I stock *e.g.* 5 mg/ml in

50% glycerol

100 mM NaCl

10 mM Tris (pH 8.0)

10 mM MgCl₂

5. Loading formamide dyes

1 ml deionized formamide

10 µl 5% solution xylene cyanol and bromophenol blue.

6. Denaturing Sequencing gel (6% acrylamide)

6% acrylamide (19:1 acrylamide: bis acrylamide) (dilute from 40% stock)

7 M urea

1x TBE

For 80 ml of acrylamide/urea/TBE mixture add 0.4 ml 10% ammonium persulphate and 40 µl TEMED to polymerise the acrylamide, mix gently and carefully pour between the gel plates (0.4 mm thick spacers) avoiding bubbles. Insert a comb to make the wells and leave to polymerise horizontally.

7. Hepes-Glutamate

25 mM Hepes (pH 8.0)

100 mM K glutamate

0.5 mg/ml BSA